

WHAT WE DO

2024



CONSTRUCTION OPERATIONS



JEFF GARNER

President

Named as Methuen Construction's President in July of 2022, Jeff's history includes serving as Chief Business Officer of MWH, President of Slayden Constructors, an MWH subsidiary in the Northwest, and Construction Manager of the \$1.8 billion San Francisco Bio-Solids project. Jeff is a proven leader both at the enterprise level and detailed project level, building successful teams while encouraging growth and supporting the successes of the teammates.

JOHN MCGRATH

Vice President of Federal Markets

Joining Methuen Construction in 2007, John held many positions across the company, from Project Manager to Project Executive and Vice President of Construction Operations, prior to becoming Vice President of Federal Markets in 2022. With over 20 years of experience in the construction industry, John is responsible for the execution and growth of the company's federal project portfolio.



GREG GALBRAITH

Vice President of Water Resources

Joining Methuen Construction in 2006, Greg held the position of Senior Project Manager before advancing to the position of Project Executive in 2016. Now as Vice President of Water Resources and with over 21 years of experience in the construction industry, Greg is responsible for leading multiple project teams for successful project execution from contract award through final completion on lump sum bid water and wastewater projects.

DENNIS LUCIA

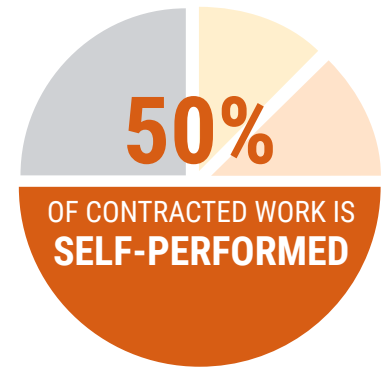
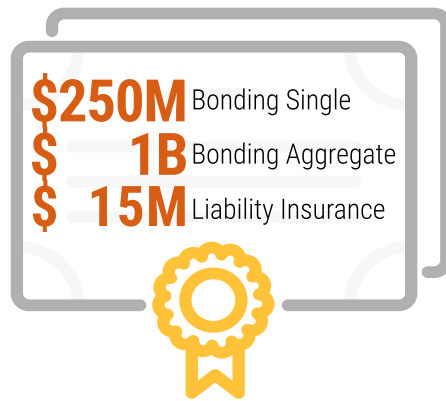
VP of Construction Operations - Leadership Development

Joining Methuen Construction in 2010, Dennis held many positions across the company from Superintendent to Director of Construction Operations, prior to being promoted to Vice President of Construction Operations - Leadership Development in 2023. With over 20 years of experience in the construction industry, Dennis oversees all field operations including direct management of all field teammates. He is also responsible for project scheduling, contract negotiations, and management of project manpower.



For a complete list of our executive professionals, visit www.MethuenConstruction.com.

BY THE NUMBERS



	SIC	NAICS
Filtration Plant, Water Construction	4941	221310
Sewage Treatment Facilities Construction	4952	221320
Industrial Building Construction	1541	236210
Water and Sewer Line Construction	1623	237110
Power/Communication Line Construction	1629	237130
Other Heavy/Civil Engineering Construction	1629	237990
Poured Concrete Foundation/Structure Contractors	1771	238110



COMPANY RESOURCES

Methuen Construction employs over 170 full-time employees. Key personnel are strategically located throughout New England to efficiently and cost effectively serve our clients.

The main support staff for our construction operations team is led by our executive leadership group consisting of our President, Vice President of Water Resources, Vice President of Federal Markets, and Vice President of Construction Operations.



Manchester Merrimack River WTP, Hooksett, NH



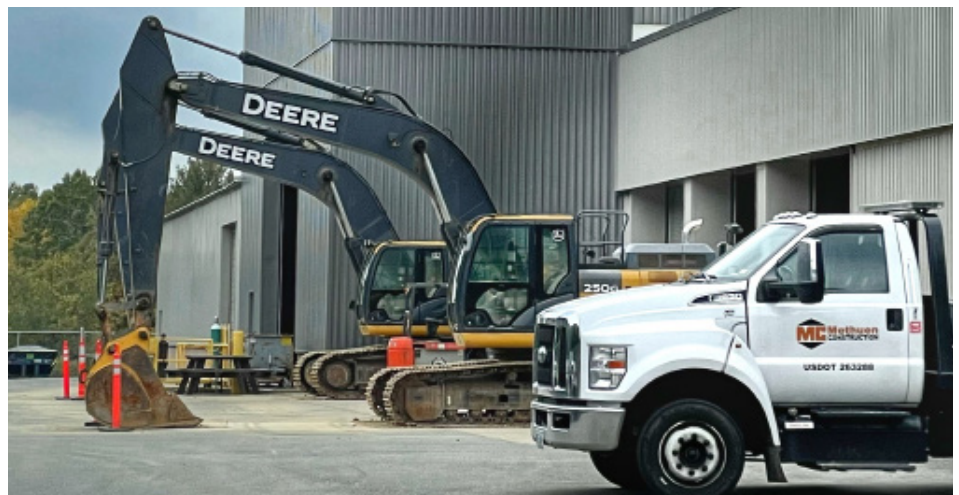
West Lynn Sewer Separation, Lynn, MA

Methuen Construction also has LEED and DBIA accredited professionals.

Methuen's field staff consists of licensed and certified Heavy Equipment Operators, Pipefitters, Welders, Laborers, Pipelayers, Carpenters, Millwrights and Ironworkers.

Methuen Construction's fleet of equipment provides competitive cost and flexibility. We currently own over one hundred pieces of the following equipment:

- Various-sized Excavators
- Various-sized Loaders
- End Dump Trucks
- Lifts
- Excavator Mounted Hammers
- Weld Trucks
- Cranes
- Backhoes
- Skid Steers
- Rollers
- Support Trucks/Manlifts
- Welders



We routinely rent specialized equipment to service project needs which helps keep costs down while increasing operations efficiency, maximizing savings to our clients.

PRIVATE MARKET

Methuen Construction has an established flow-through process designed specifically to help clients successfully bring their projects from the concept phase through the commissioning phase.

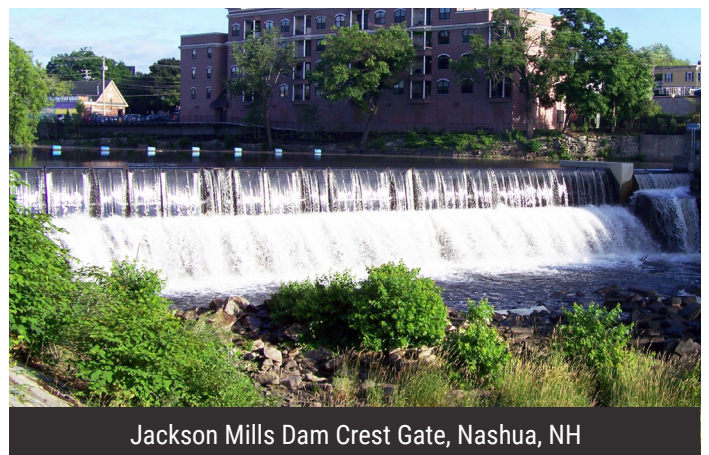
Methuen Construction believes the success of the project starts with contractor presence in the concept phase of a project. This approach yields the owner a more custom solution at a more efficient cost, in a faster timeframe, yielding quicker returns on investment.



Design-Build Shredder Project at a Metals Recycling Facility



Liquefied Natural Gas Vaporizer Skid, Whately, MA



Jackson Mills Dam Crest Gate, Nashua, NH

FEDERAL MARKET



Portsmouth Naval Shipyard, Kittery, ME

Continuously since 2010, Methuen Construction has been bidding and performing work at various types of U.S. government facilities including naval shipyards, military bases, and national parks, as well as other types of installations.

Methuen Construction performs civil and industrial-type projects that are mission critical and key to the success of our client's operation.



Consolidating the existing operations at the Shipyard, the new Paint, Blast, and Rubber facility consists of industrial shop spaces, offices, break rooms, locker rooms, and support spaces. It will also contain blast booths, paint booths, rubber molding equipment, rubber processing equipment, and various other equipment.



Complete renovation of Historic Buildings 75 and 76, including demolition of Building 46, demolition of a portion of Building 76, and a new two-story addition built in its place.

Methuen Construction has a uniquely skilled team specially trained to successfully perform work in the federal market.

MUNICIPAL MARKET

Working with industry leaders and local municipalities, Methuen Construction has the skills and expertise to build cutting-edge water and wastewater facilities from the ground up, upgrade aging facilities to incorporate the latest technological advancements, and successfully complete large complex renewable energy and power projects.



Energy Recovery Facility, Nashua, NH



Combined Heat & Power Facility, Salem, MA

As a leader in building waste to energy facilities, anaerobic digesters, and combined heat and power facilities, Methuen Construction has successfully completed projects as diverse as installing new turbines at old hydro dams, constructing wind turbines, and installing photovoltaic arrays.

Methuen Construction has also installed and constructed aeration towers, security systems, chemical feed systems, and pump stations among other technologies.



Organics to Energy Digester Facility, North Andover, MA

PARTNERING WITH METHUEN

Methuen Construction truly understands that it takes a uniquely qualified and skilled team of subcontractors and vendors to successfully complete a project safely, on time, and under budget.

Methuen Construction has a dedicated in-house specialist who is the main point of contact for all our collaborative partners and vendors to coordinate with from the conceptual phase to the commissioning phase.

The synergy between our team and these partnerships create an environment that has proven to increase quality, decrease costly delays, and when combined, results in cost savings to our clients.